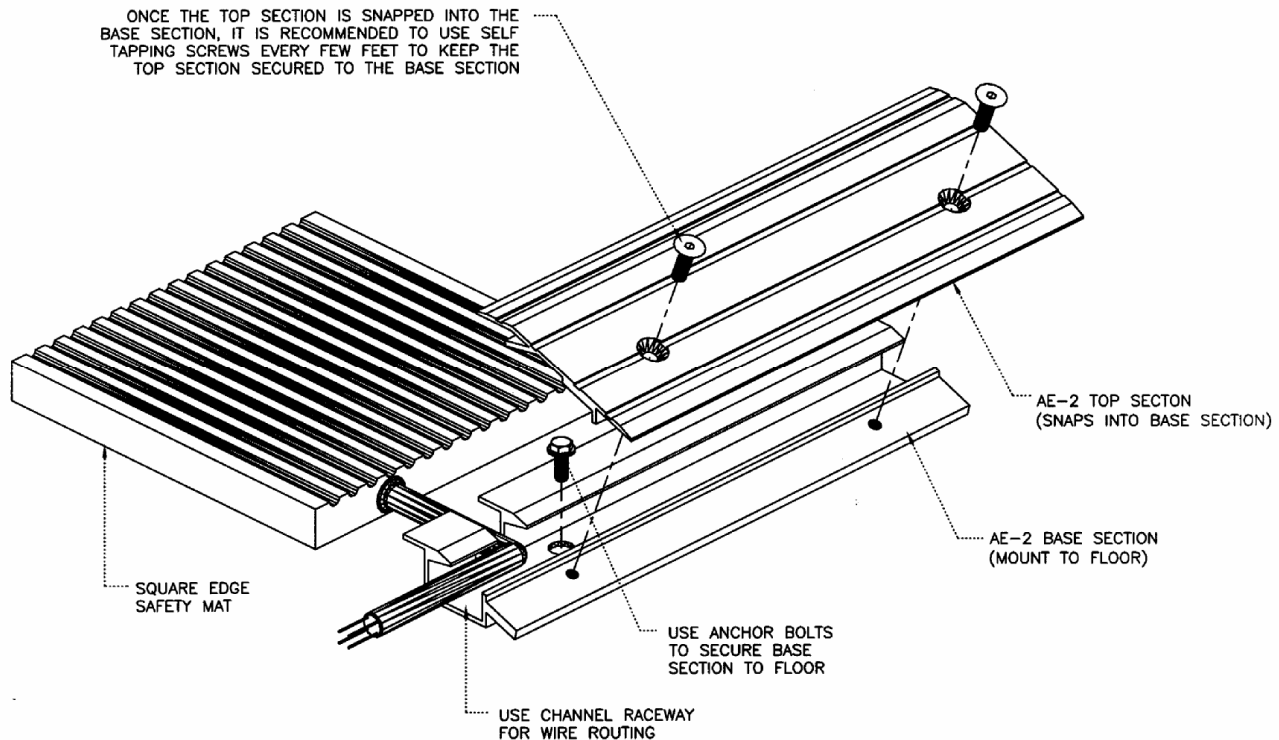


AE-2 Safety Mat Edging - Installation



AE-2 Installation Notes

1. Aluminum edge components are supplied as a 2-part assembly, consisting of a base and a top cover. The base is fastened to the floor to keep the mat from moving. It includes a raceway channel for routing the safety mat electrical leads. The top section provides a ramped edge to minimize the trip hazard and provides a cover for the wire channel.
2. The aluminum edges can be supplied pre-cut with mitered corners to fit the overall mat size. If not supplied, measure each side of the mat and cut the aluminum edge to fit. Use a 45° miter cut for corners and a 90° cut for joining straight lengths.
3. Position sensing mat where desired on a flat, clean floor with label side up and wire lead facing in correct orientation.
4. Center the aluminum edge on the mat, locate and drill a 0.344" hole through the vertical wall of the extrusion to accept wire lead from the sensing mat. Remove burrs and sharp edges from hole. Pull lead wire through and temporarily lay in recess. Anchor this edge in place per note 6. Use this side to bank all other sides.
5. Lay out remaining aluminum edges around mat. The edging lip is designed to sit on the mat surface, providing a seal against debris intrusion.
6. Once aluminum edge frame is laid out, check for squareness and install remaining anchor bolts. Anchorage to concrete is assumed. If otherwise, customer to provide suitable anchors. **Edging must be rigidly fixed to the floor.** Install anchors at approximately 18" intervals around the perimeter.
7. Route lead wire where desired. Cut a lead wire exit hole or notch in the aluminum cover.
8. Wire sensing mat into the system as required and check operation.
9. Place the aluminum covers into place on the base sections. Secure by snapping into place. It is recommended that the covers be secured to the bases with self-tapping screws as shown in **Figure 7B**.