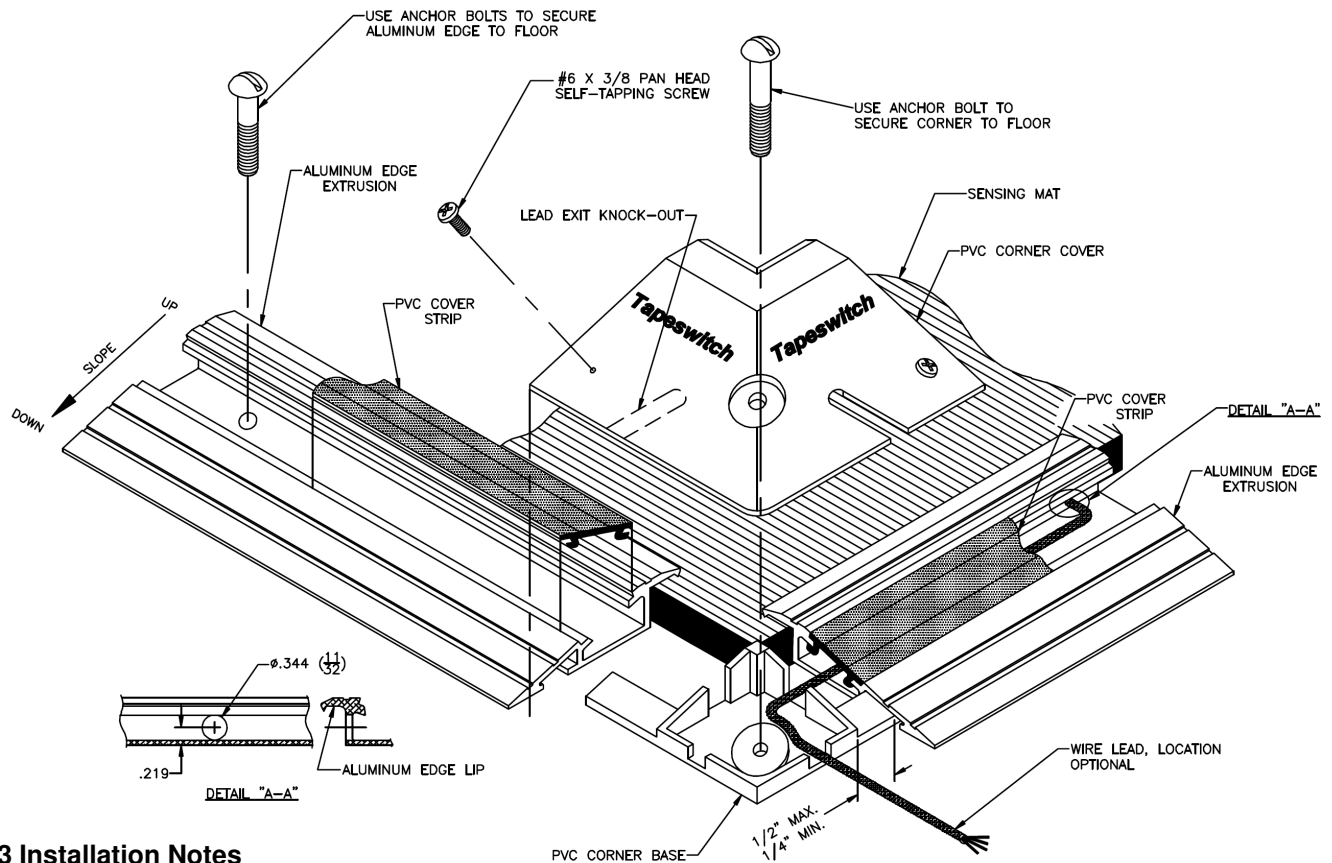


AE-3 Safety Mat Edging - Installation



AE-3 Installation Notes

1. Aluminum edge components can be supplied pre-cut 1/2" less than the nominal overall mat size. If not, measure mat side length, then cut aluminum edge to 1/2" less in length, i.e., 23-1/2" for a 24" mat, 35-1/2" for a 36" mat.
2. Position sensing mat where desired on a flat, clean floor with label side up and wire lead facing in correct orientation.
3. Center the aluminum edge on the mat, locate and drill a 0.344" hole through the vertical wall of the extrusion to accept wire lead from the sensing mat. See **DETAIL "A-A"**. Remove burrs and sharp edges from hole. Pull lead wire through and temporarily lay in recess. Anchor this edge in place per note 5. Use this side to bank all other sides.
4. Lay out remaining aluminum edges and PVC corner bases around mat. The edging lip (see **DETAIL "A-A"**) is designed to sit on the mat surface, providing a seal against debris intrusion. Gaps up to 1/2" are permitted at all corners where tongue mates with aluminum edge. If a slight interference occurs, trim the edging lip as required. This will be covered by the PVC corner cover.
5. Once aluminum edge frame is laid out, check for squareness and install remaining anchor bolts. Anchorage to concrete is assumed. If otherwise, customer to provide suitable anchors. **Edging must be rigidly fixed to the floor.** Install anchors at approximately 18" intervals around the perimeter. **Note: Do not install anchors at the corners until PVC corner covers are put in place.**
6. Route lead wire where desired. Lead wire may exit at any corner using the appropriate corner knockout. Use a utility knife to carefully scribe around knockout outline until it can be removed cleanly. Trim as necessary.
7. Wire sensing mat into the system as required and check operation.
8. Affix the yellow PVC cover strip into place. This can be done by inserting the upslope side first and tapping the downslope side with a soft face hammer or by sliding it in from one end. Notch the cover strip as required to clear lead wire. **Note: Once installed, the fill strips are subject to damage, if removed.**
9. Place the PVC corner covers into position. Align hole and secure each with an anchor bolt.
10. (Optional) Drill 7/64" holes at each pre-located center pointed on the corner covers and install a #6 x 3/8 self-tapping screw to complete the installation.